

# USER MANUAL

---

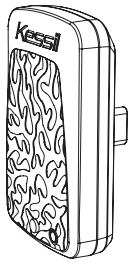
## WiFi Dongle



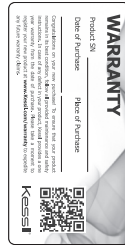
# TABLE OF CONTENT

01 INSIDE THE BOX, NAVIGATION, WARNING .....	1
02 INSTALLATION & CONNECTION .....	2
03 INDICATOR STATES .....	3
04 RESET, SAFETY INSTRUCTIONS, SPECIFICATIONS .....	4
05 FCC STATEMENT .....	5

# INSIDE THE BOX



WiFi Dongle



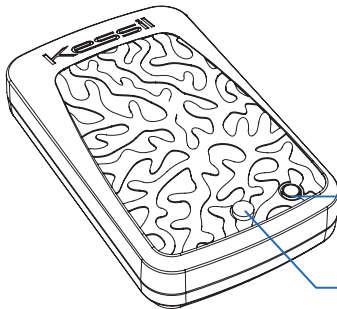
Warranty Card



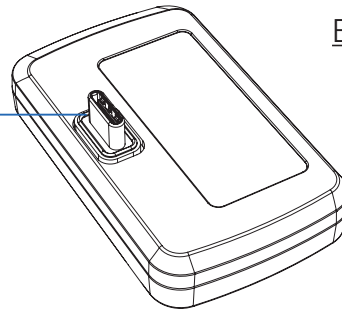
QR Code Stickers  
( This is for wireless connection process,  
please SAVE these stickers )

# NAVIGATION

Front



Back

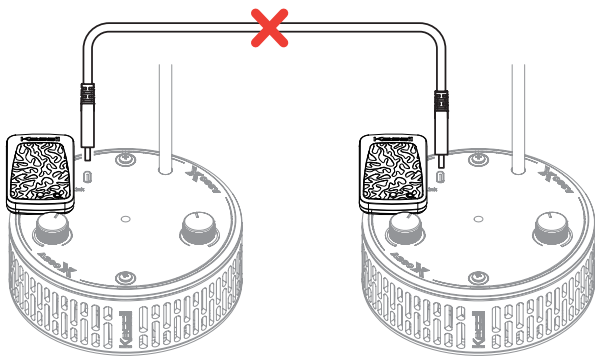


A. Status Indicator

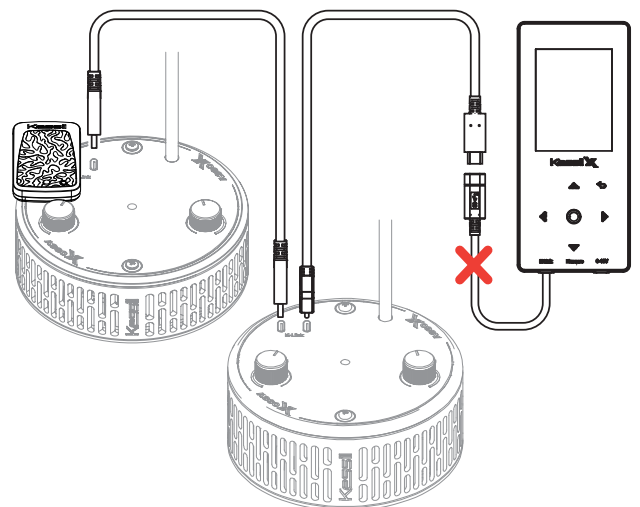
B. Reset Button

C. K-Link Connector

# WARNING

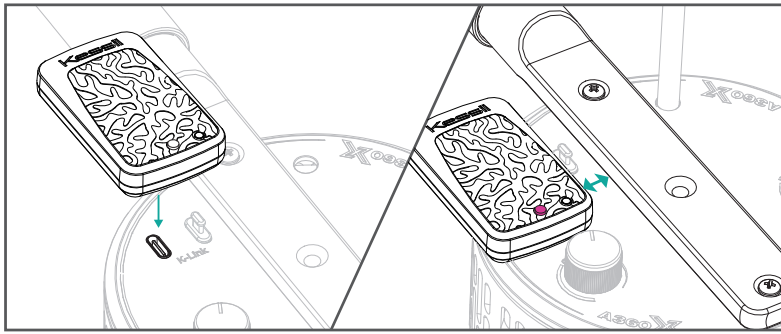


DO NOT daisy-chain two light fixtures  
with WiFi Dongles.



DO NOT plug in both WiFi Dongle and  
Spectral Controller X.

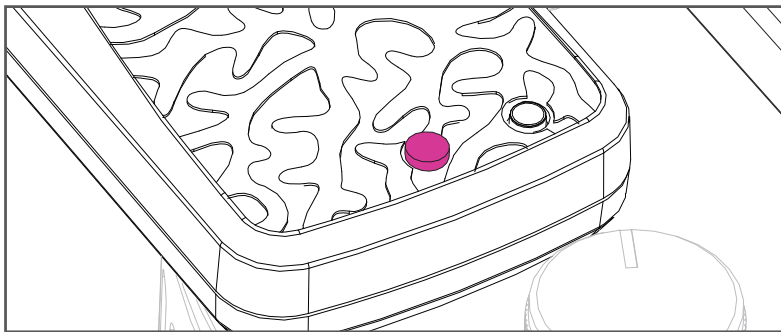
# INSTALLATION & CONNECTION



## Step 1 Plug in the WiFi Dongle

Plug in the WiFi Dongle to the left K-Link port to avoid close contact with Mounting Arm or gooseneck bracket. Make sure the light is plugged in to power.

Keep plastic covers for K-Link ports plugged in when the ports are not in use. Keep the ports clean all the time.



## Step 2 Booting

The WiFi Dongle requires 20-30 seconds to boot. The WiFi Dongle Status Indicator (A) will first show **purple** light, and then turn to **orange** light.



## Step 3 Download "Kessil WiFi" app

Download the "Kessil WiFi" app\* in App Store or Google Play Store.



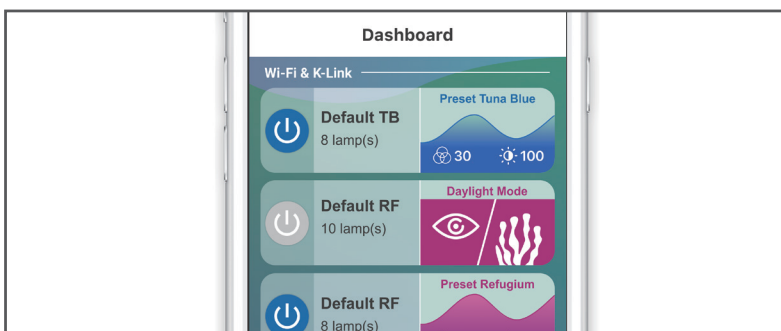
\* Only supports iOS 12.0 or above and Android 8.0 or above



## Step 4 Fast to Connect

Open the "Kessil WiFi" app and follow the instructions in the app to connect to WiFi Dongle. You will need the QR Code Sticker provided in the package. You can fast to control through scanning QR Code continuously.

\* If you wish to enter the password manually, the password is reverse of the S/N of the WiFi Dongle (capital letter matters).

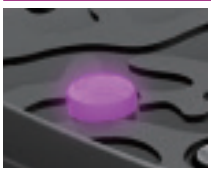


## Step 5 Start to Control WiFi Dongle

After you finish set up connection with WiFi Dongle, you will start to control the lights.

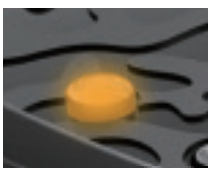
# INDICATOR STATES

	AP Mode <small>(Allow other Kessil WiFi Dongle to connect to itself)</small>	STA Mode <small>(To connect to a wireless router or master WiFi Dongle)</small>
Booting	Solid Purple	
Standby / No Connection	Solid Orange	Solid Red
Connected	Solid Blue	Solid Green



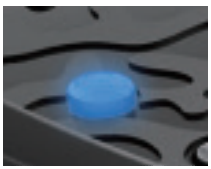
## Solid Purple

The WiFi Dongle requires 20-30 seconds to boot. The WiFi Dongle Status Indicator (A) will show solid **purple** light.



## Solid Orange

Standby mode, ready to be connected.



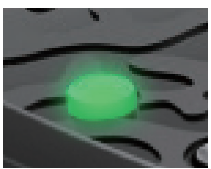
## Solid Blue

AP mode. Successfully connected to mobile device and act as the master (through "Connect Directly Via WiFi").



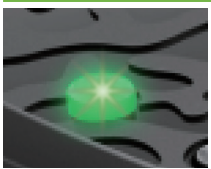
## Solid Red

Attempting to connect. If it stays for more than 3 minutes, reset Dongle's WiFi configuration (use sharp object to press the Reset Button (B) for 3 seconds) and add the WiFi Dongle in the app again.



## Solid Green

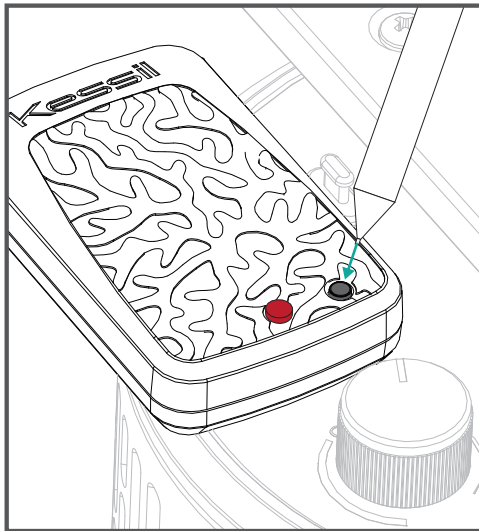
STA mode. Successfully connected to wireless router or to the master WiFi Dongle as slave.



## Blinking Green

When updating the WiFi Dongle's firmware through Kessil WiFi app, the Status Indicator (A) will **blink green** light.

# RESET



## Use a sharp object to press the Reset Button (B)

- **Reboot the WiFi Dongle**  
Press the Reset Button (B) once to reboot the WiFi Dongle when error occurs.
- **Reset the WiFi Dongle WiFi configuration**  
Press the Reset Button (B) for 3 seconds to reset the WiFi configuration. The Status Indicator (A) will turn **solid red**. User's settings will not be deleted. The Status Indicator (A) will change to **solid orange** after booting.
- **Factory reset the WiFi Dongle**  
Press the Reset Button (B) for more than 10 seconds to reset the WiFi Dongle. The Status Indicator (A) will **blink red** light. User's settings will be deleted. The Status Indicator (A) will change to **solid orange** after booting.


# SAFETY INSTRUCTIONS

- DO NOT shield the unit or cover with any object for optimal performance.
- DO NOT use outdoors. This unit is intended for indoor use only.
- DO NOT expose unit to an extremely humid environment or submerge unit in water. This may lead to unit failure.
- DO NOT use the unit near fuel or chemicals or in any prescribed area such as service stations, refineries, hospitals and aircraft.
- DO NOT use the unit for other than intended use.

## Consignes de sécurité

- NE PROTÉGEZ PAS L'APPAREIL ET NE LE RECOUVREZ D'AUCUN OBJET POUR OBTENIR DES PERFORMANCES OPTIMALES.
- NE PAS UTILISER À L'EXTÉRIEUR. CET APPAREIL EST CONÇU POUR UNE UTILISATION EN INTÉRIEUR UNIQUEMENT.
- NE PAS EXPOSER L'APPAREIL À UN ENVIRONNEMENT EXTRÊMEMENT HUMIDE NI L'IMMERGER DANS L'EAU. CELA PEUT ENTRAÎNER UNE PANNE DE L'UNITÉ.
- N'UTILISEZ PAS L'APPAREIL À PROXIMITÉ DE CARBURANT, DE PRODUITS CHIMIQUES OU DANS DES ZONES RÉGLEMENTÉES TELLES QUE LES STATIONS-SERVICE, LES RAFFINERIES, LES HÔPITAUX ET LES AÉRONEFS.
- NE PAS UTILISER L'APPAREIL POUR UN USAGE AUTRE QUE CELUI PRÉVU.

# SPECIFICATIONS

Dimensions	2.08" x 1.26" x 0.67" (53mm x 32mm x 17mm)
Weight	0.04lb/18g
Rating	5V  400mA
Operating Frequency	IEEE 802.11 g/n (2.4GHz)
Network Encryption Type	WPA-PSK / WPA2-PSK (Do not support WEP, WPA-Enterprise, WPA2-Enterprise, and Monitor Mode.)

# FCC STATEMENT

This device complies with Part 15 of the FCC Rules. Operation is subject to the following two conditions: (1) This device may not cause harmful interference, and (2) this device must accept any interference received, including interference that may cause undesired operation.

This equipment has been tested and found to comply with the limits for a Class B digital device, pursuant to Part 15 of the FCC Rules. These limits are designed to provide reasonable protection against harmful interference in a residential installation. This equipment generates, uses and can radiate radio frequency energy and, if not installed and used in accordance with the instructions, may cause harmful interference to radio communications. However, there is no guarantee that interference will not occur in a particular installation. If this equipment does cause harmful interference to radio or television reception, which can be determined by turning the equipment off and on, the user is encouraged to try to correct the interference by one of the following measures:

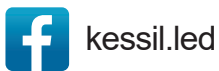
- Reorient or relocate the receiving antenna.
- Increase the separation between the equipment and receiver.
- Connect the equipment into an outlet on a circuit different from that to which the receiver is connected.
- Consult the dealer or an experienced radio/TV technician for help.

## **FCC Caution:**

- Any changes or modifications not expressly approved by the party responsible for compliance could void the user's authority to operate this equipment.
- This transmitter must not be co-located or operating in conjunction with any other antenna or transmitter.

## **Radiation Exposure Statement:**

This equipment complies with FCC radiation exposure limits set forth for an uncontrolled environment. This equipment should be installed and operated with minimum distance of 8 inches (20cm) between the radiator & your body.



## **Kessil Lighting**

**A DiCon Business Division**

1689 Regatta Blvd, Richmond, CA 94804

(510) 620-5250

Kessil.com